

FLOTEX Cleaning and Maintenance with **Rotowash**

- The **rotowash** advantages:
- The contra-rotating brushes of the **rotowash** can be used on a regular basis to remove the daily grime that builds up on the **Flotex** carpet.
- The deep cleaning effect of the **rotowash** brushes vibrate the fine particles of dirt to the surface of the pile where they are encapsulated by water, preventing them from becoming airborne.
- This dirty residue is then automatically collected in the waste water tray at the rear of the machine.

FLOTEX Cleaning and Maintenance with **Rotowash**

- Only small amounts of water are required to encapsulate the dust particles and the brush pressure and speed leaves the surface dry almost immediately.
- With regular use of the **rotowash** in this manner, the chances of ingrained stains are greatly reduced.
- A deodorant can be added to the clean water tank of the **rotowash**. Deodorants fall into two categories, those that mask the odour with a fragrance and those that neutralize the bacteria that produces the odour.
- The **rotowash** machine can also be used for an annual or biannual deep clean. The period of time between this type of clean will depend on the amount of traffic and heavy soiling in the area.

FLOTEX Cleaning and Maintenance with **Rotowash**

- The brushes take only seconds to remove from the **rotowash** machines for cleaning



Push out the Axle



Remove the Brush

and only a few minutes are needed, at the end of a cleaning operation, to prepare the machine for the next job.

The **rotowash** method:

Regular Cleaning.

Prepare the surface by removing large waste particles i.e. paperclips, waste paper etc.
Add water to the clean water tray or tank with deodorant if required



Clean Water Tray



Height Control Knob

Adjust the brush height so that the brush is sweeping the pile

This adjusts the pressure of the brushes on the floor surface. The marks represent the pile of the carpet, when using on hard floors ensure the smallest mark is in line with the dot above the dial.

Turn clockwise to reduce the pressure for carpets and surfaces which may cause friction – adjust the amount of pressure according to ease of use and water pick up. Only adjust the knob when the handle is in the upright/off position

Starting the machine

Start the **rotowash** machine and using only a small amount of water run the machine over the area to be cleaned.

Extra water may be required on any stains but water should be used sparingly.

Stand behind the machine and gently tilt the handle to the right before pulling the handle back and down, this lifts the transport wheels, starts the machine and allows the rotating brushes to touch the floor surface.

When using the gravity feed model use a backward and forward movement, push the red button, to release the water when moving forward – do not push the button when moving backwards (this will leave water on the floor).

General Information

- **Keep a steady pace – moving too quickly does not allow the brushes time to clean and dry.**
- **Move the machine backwards and forwards (not sideways) as both the brushes must pass over the area to be cleaned to collect the water and dirt.**
- **Sideways movement can cause smearing and dirty patches will occur.**
- **Pre spray any stains with a proprietary spotter**

Cut Off/Overload Switch

Activated when the motor becomes over heated (generally caused by friction or something being caught around the brushes) preventing the brushes from rotating.



Cut out button on all models (except B models) is at base of machine.

The cut out button on all B models is on the handle – Both can be reset by firmly pushing the black button which is in the clear plastic bubble.

This can be easily re-set by pushing the black button within the clear plastic housing with a pen or pencil until it clicks back into place. (a finger may not always push deeply enough)

Annual or Biannual Deep Clean

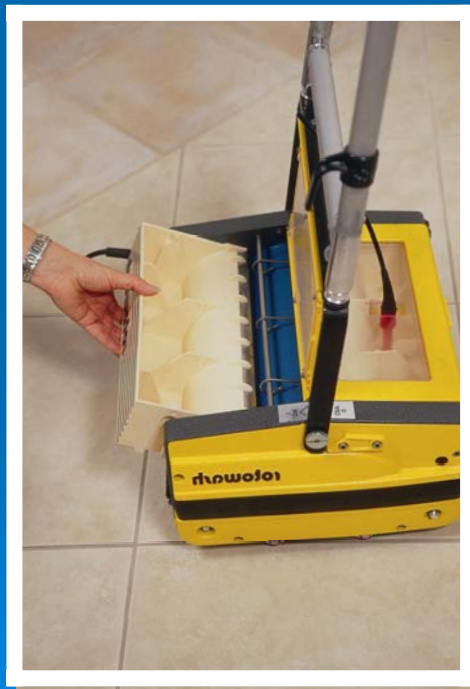
- An annual or biannual deep clean, sometimes called a flood and scrub, should be part of the maintenance programs for **Flotex** installations in order to remove any chemical residue which has not been removed during regular cleaning.
- This residue can build up in the pile over a period of time and can become a major cause of resoiling.



The **rotowash** method:

Step 1: Scrub only.

The waste water tray of the **rotowash** machine is removed from the normal operating position and is repositioned with the pick up blade on top of the spring bar.



With the waste water tray in this position the water applied to the floor surface is not picked up and the machine can be used to scrub the **Flotex**. The water that is applied to the surface is scrubbed through the pile and because it is not being immediately picked up, it has time to mix with the dry chemical residue and turn it back into a liquid chemical for removal in step2.

Step 2: Collection of Chemical residue.

The waste water tray is now replaced with the pick up blade in the normal position under the spring bar.

Using the same method as shown in 'Starting the Machine' but without applying any more water, the dirty water and chemical is picked up by the machines mechanical brush action.

Step 3: Rinse and Dry.

Once all the dirty water has been removed in step 2, the brushes are removed for cleaning and dry brushes are installed to the machine in preparation for the rinse and dry operation.

The rinse and dry operation is the same as the regular cleaning method where only very small amounts of clean water need to be used. As long as water is still being collected in the waste water tray then there is no need to apply more water.

Care & Maintenance

When the floor cleaning operation is completed it is recommended that the machine should be cleaned to avoid dirt build up and the transfer of dirt to the next job.

If protective gloves are not already worn, they should be during cleaning of the machine.



Waste Water Tray

Before cleaning or carrying out maintenance, switch off the appliance and disconnect the mains plug.

Clean the outside of the machine use a neutral detergent and damp cloth.

Do not use abrasive detergents; do not use a hose or jet spray.

Remove the waste water tray by lifting the lid and holding the tray whilst tilting it and gently but firmly removing it from under the spring support bar.

Rinse thoroughly in a sink with the aid of a brush.

Caution: The stripper blade should be cleaned with care.

Care & Maintenance

If any liquid remains in this tray, it should be removed by lifting out the tray and tipping the remains into a bucket.



The Bowden cable can now be unscrewed and the tray cleaned.

Remember – pay particular attention to the underneath of the tray, especially the lip with the holes where the water exits the tray.

These can become blocked with dirt and fibres from carpets.

Clean Water Tray (A models only)

Brush Cleaning



Removing the Brush Axle Rod

Both the front and back brushes are easily removed by pushing the axle rod which holds them into place and pulling it out from the opposite side of the machine.

The Brushes can be washed and rinsed in a bucket or sink.

If not placed back into the machine they should be stood on end to dry.

Brush Cleaning



Drying the Brushes



Replacing the Brushes

All machines have brush locators to make the brushes easier to install. Brushes will fit back or front and once seated in the brush locators the axle rod should be inserted into the hole in the side casting under the black rubber bumper. As the axle rod and hole are both hexagon shaped they need to be lined up to ensure smooth running through the center core of the brush. When the axle rod reaches the far side it must again align the hexagon shape to fit into both side castings. There is no need to force the axle rod, if it does not “click” instantly, simply turn the brush gently as you push the axle rod into the hole.